

Embedded Computer User Manual



Safety Maintenance:

Please maintain your system properly to make sure its service life and reduce the damage risk.

- It should be avoid the humidity and extreme temperature when being used.
- Avoid prolonged exposure of the unit to direct sunlight or strong ultraviolet

light.

- Do not drop the unit or let it be in any place with severe shock/vibration.
- Please avoid the collision as the LCD screen is very easy to be scratched.

Do not use any sharp object to touch the screen.

- To clean the outside, please turn off the power, unplug the power cord, wipe with

slightly damp soft cloth. When cleaning the screen, please wipe with the lint free soft cloth.

- Never attempt to disassemble or repair the machine, otherwise the unit may be damaged.

- Do not place the unit or accessories together with other flammable liquids, gases, or other explosive materials to avoid danger.

Content

1. Product Description	3
1.1 Brief Introduction	3
1.2 Optional Functions	3
1.3 Basic Parameters	3
1.4 3G/4G Support Parameter&Switch	5
2. Structure Function Explanation.....	6
3. Extended Cable Definition	7
3-1 Serial Port.....	8
3-2 GPIO Interface	11
4. Memory Card Instruction	12
5. Operation Guide	12
Basic Operation	12
6. Mounting Methods.....	16
7. Accessories.....	15
8. Trouble Shooting.....	18

1. Production Description

1.1 Brief Introduction

- 7" 16:10 multi point capacitive touch screen, 1280x800 physical resolution.
- Intel Atom Z8350 1.44G , 2G DRAM , 32G Emmc, Intel HD Graphic 400;
- Windows 10 32-bit;
- RS232x4/GPIO (4 input, 6 output) /LANx2/USB2.0/USB3.0/HDMI interface;
- Micro SD (TF) card storage, mini SIM card slot.

1.2 Optional Functions

- 3G/4G (built-in)
- Wi-Fi 802.11 b/g/n & Bluetooth 4.0 (built-in)
- PoE (built-in)

1.3 Basic Parameters

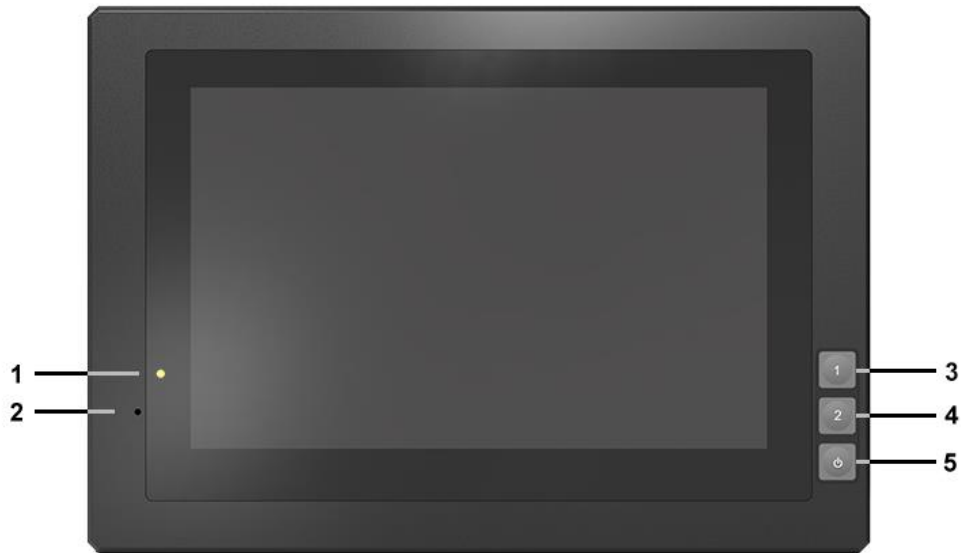
Configuration	Parameters
Display	7"
Touch panel	Capacitive
Physical Resolution	1280x800
Brightness	400cd/m ²
Contrast	800:1
Viewing Angle	160°/160° (H/V)
System Hardware	CPU: Intel Atom Z8350 1.44GHz ROM: 32GB Emmc RAM: 2GB LPDDR3

	GPU: Intel HD Graphic 400	
	OS: Windows 10 32-bit (Optional)	
Interfaces	SIM card	1.8V/2.95V, mini SIM
	TF card	1.8V/2.95V, up to 64G
	USB	USB host 2.0x2 (support USB 3.0)
	GPIO	Inputx4, Outputx6 (See section "3. Extended Cable Definition" for details.)
	HDMI output	HDMIv1.4
	LAN	100Mx2
	Serial Port	COM3 COM4 COM5 COM6
	Ear Jack	1
Optional Function	Wi-Fi	802.11a/b/g/n 2.4GHZ
	Bluetooth	Bluetooth 4.0 2402MHz~2480MHz
	3G/4G	(See section 1.4 for details.)
	GPS	External
	PoE	25W
Multimedia	Audio	MP3/AAC/AAC+/WAV/FLAC/APE/AMR/MP4/MOV/F4V...etc.
	Video	Encode: 1080p30 H.264 BP/dual 720p encoding Decode: 1080p30 + D1
Input Voltage	DC 9~36V	
Power Consumption	Overall ≤ 10W Standby < 5W	
Working Temperature	-10°C~50°C	
Storage Temperature	-30°C~70°C	
Dimension (LWD)	206×144×30.9mm	
Weight	790g	

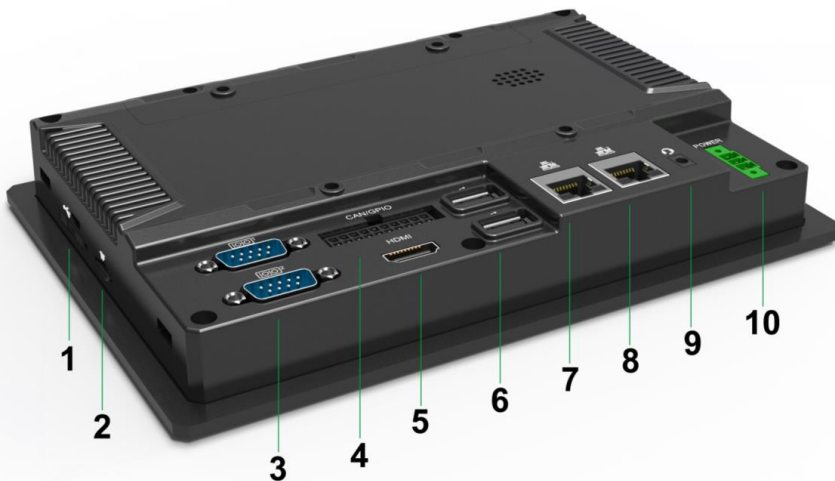
1.4 3G / 4G Support Parameter & Switch

Band (Different versions support different bands)	Version 1 China/India	FDD LTE: Band 1/Band 3/ Band 8 TDD LTE: Band 38/Band 39 /Band 40/Band 41 DC-HSPA+/HSPA+/HSPA/UMTS: Band 1/Band 5/Band 8/Band 9 TD-SCDMA: Band 34/Band 39 GSM/GPRS/EDGE: 1800 /900
	Version 2 EMEA/South America	FDD LTE: Band 1/Band 2 /Band 3/Band 4 /Band 5 /Band 7/Band 8/Band 20 WCDMA/HSDPA/HSUPA/HSPA+: Band 1/Band 2/Band 5/Band 8 GSM/GPRS/EDGE: 850/900/1800/1900
	Version 3 North America	LTE: FDD Band 2/Band 4/ Band 5/Band 12 /Band 13/Band 17 WCDMA/HSDPA/HSUPA/HSPA+: Band 2/Band 4/Band 5
Data Transmission	LTE	LTE-FDD Max 150Mbps(DL)/Max 50Mbps(UL) LTE-FDD Max 130Mbps(DL)/Max 35Mbps(UL)
	DC-HSPA+	Max 42 Mbps(DL)/Max 5.76Mbps(UL)
	WCDMA	Max 384Kbps(DL)/Max 384Kbps(UL)
	TD-SCDMA	Max 4.2 Mbps(DL)/Max2.2Mbps(UL)
	EDGE	Max 236.8Kbps(DL)/Max 236.8Kbps(UL)
	GPRS	Max 85.6Kbps(DL)/Max 85.6Kbps(UL)

2. Structure Function Explanation



1. Power indicator
2. Reset & burn button
3. User-definable button1 (F1)
4. User-definable button2 (F2)
5. Power on/off button

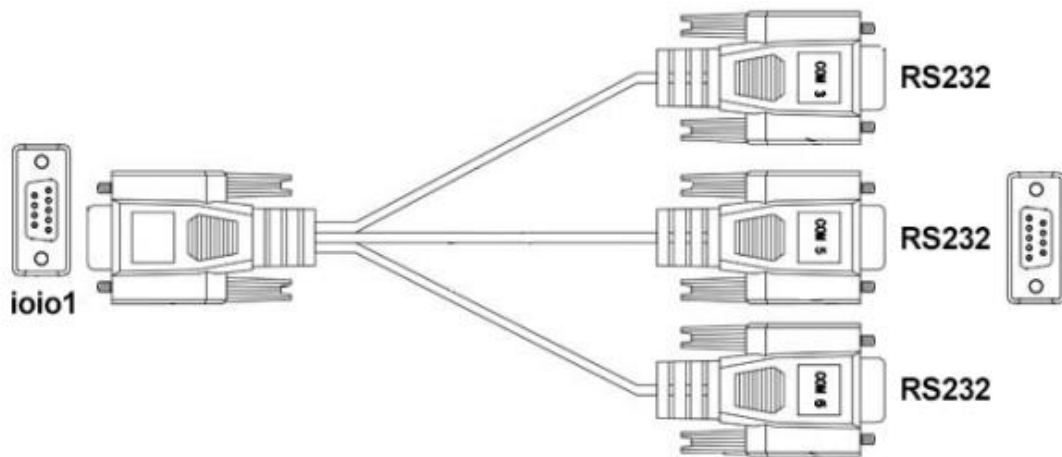


1. Mini SIM card slot.
2. Micro SD slot
3. IOIO 1: (RS232 standard interface, connecting with DB9 standard cable to convert to 3xRS232 ports).
- IOIO 2: (RS232 standard interface, connecting with DB9 optional cable to

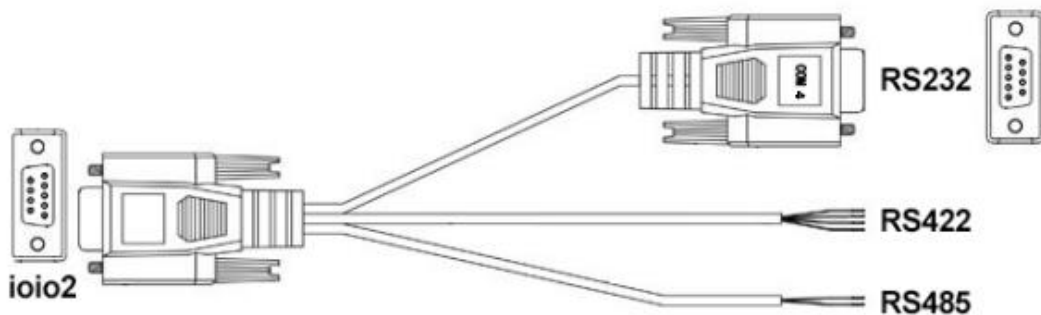
convert to 1xRS232, 1xRS422 and 1xRS485 ports).

4. GPIO (For extended cable definition, please refer to "3. Extended Cable Definition").
5. HDMI output.
6. USB Hostx2.
7. 100M LAN.
8. 100M LAN, POE function for optional.
9. Ear jack.
10. Power interface.

3. Extended Cable Definition

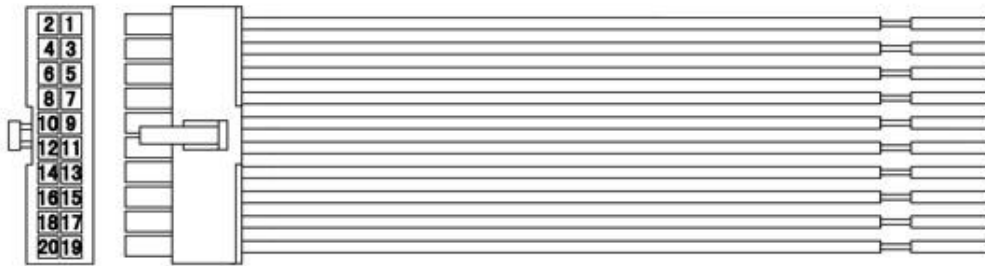


DB9 standard cable



DB9 optional cable

Item			Definition
Com 3	RS232		COM3
Com 4	RS232		COM4
Com 5	RS232		COM5
COM 6	RS232		COM6
RS422	Red A	White Z	COM5
	Black B	Green Y	
RS485	Red Positive Pole		COM6
	Black Negative Pole		
<p>Note: RS232 and RS422 are alternative for COM5. RS232 and RS485 are alternative for COM6. It should match with standard cable when using IOIO 1; Otherwise there is a risk of short circuit.</p>			



GPIO

No.	Item	Definition												
1	Gpio Interface	Gpio Input	2		4		6		8					
			Gpio_57		Gpio_82		Gpio_87		Gpio_92					
		Yellow		Yellow		Yellow		Yellow						
		Gpio Output	10		12		1		3		5		7	
			Gpio_93		Gpio_191		Gpio_9		Gpio_171		Gpio_174		Gpio_175	
Blue		Blue		Blue		Blue		Blue		Blue				
Gpio GND		13						Black						

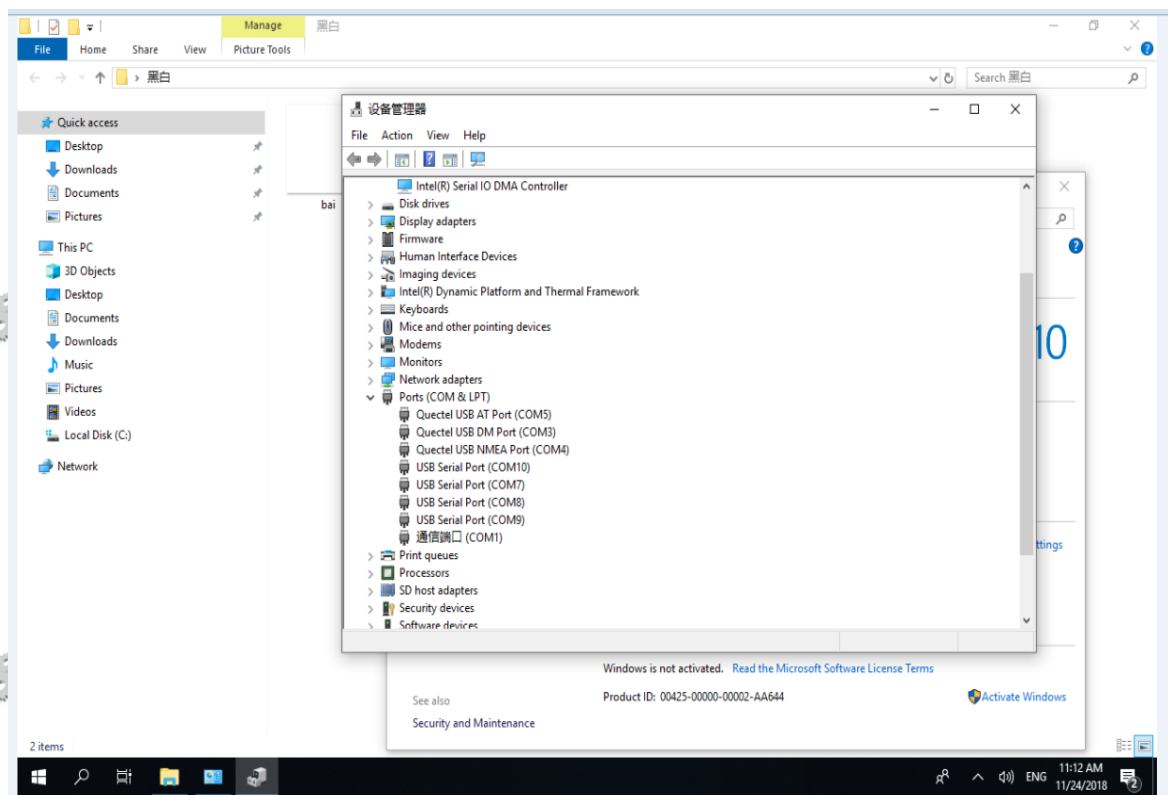
3-1 Serial Port

The COM port serial will change bases on the installation order of the 3G/4G device and the FTDI USB serial port device, which affect the serial port access of RS485/RS422.

The following figure shows the serial port identifier after installing the 3G/4G driver first and then installing the USB serial port driver.

COM7/COM8/COM9/COM10 show as USB Serial Port.

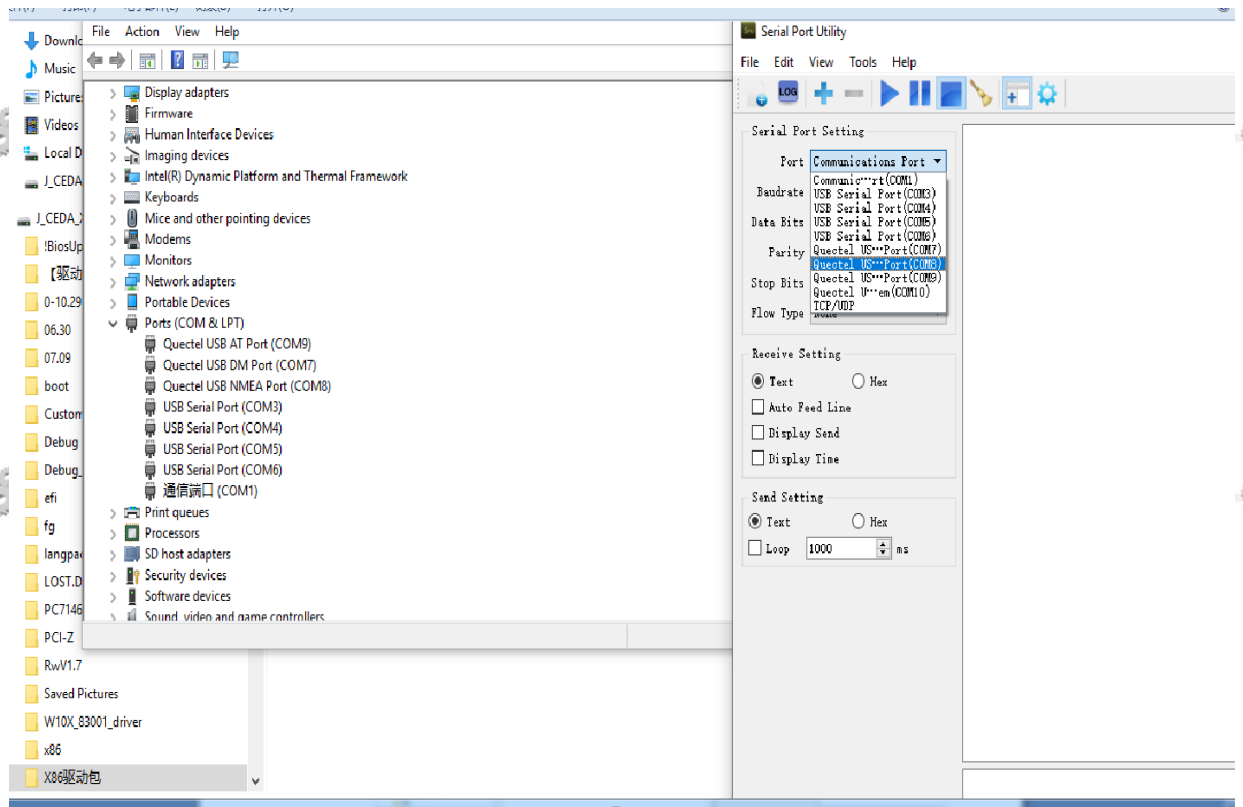
COM3/COM4/COM5/COM6 show as Quectel USB AT Port (3G/4G serial port). COM6 is Modem data serial port.



The following figure shows the serial port identifier after installing the USB serial port driver first and then installing the 3G/4G device.

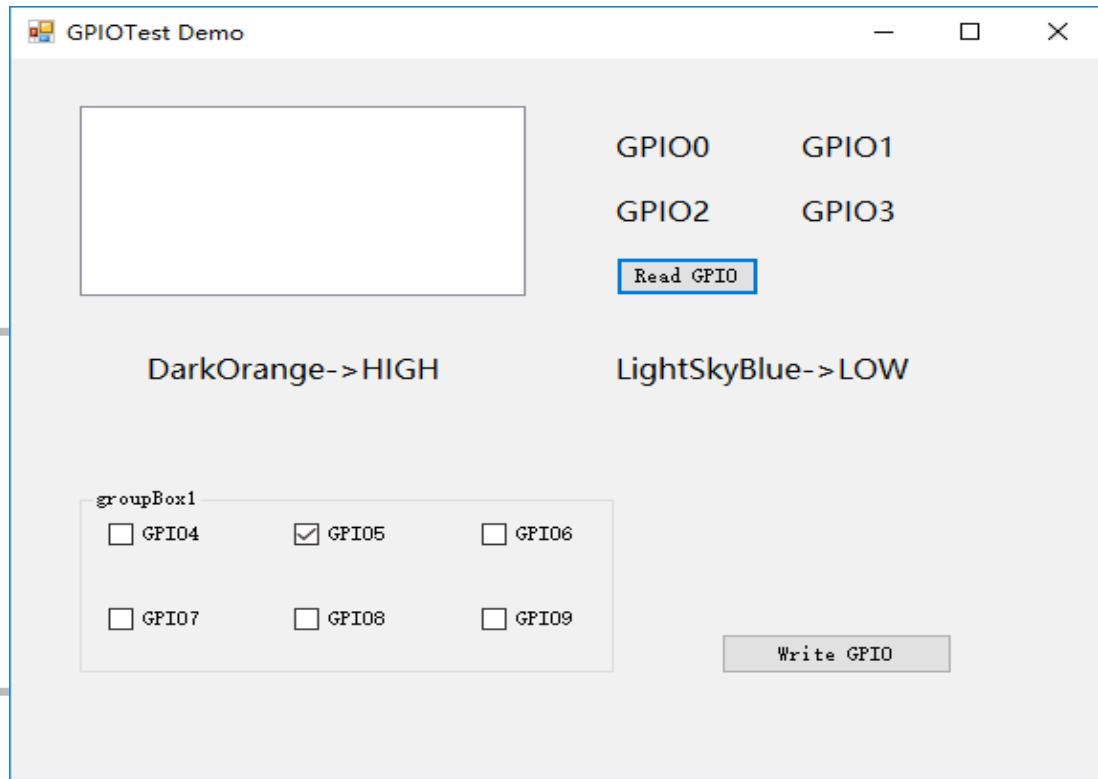
COM3/COM4/COM5/COM6 show as USB Serial Port.

COM7/COM8/COM9/COM10 show as Quectel USB AT Port (3G/4G serial port). COM10 is Modem data serial port.



3-2 GPIO Interface

1. GPIO interface as shown below.



(GPIO0-GPIO3 is input port, GPIO4-GPIO9 is output port.)

For the implement and assess method, please see "GPIOTest demo " in CD coming with the device for details.

4. Memory Card Instructions

- The memory card and the card slot on the device are precision electronic components. Please align to the position accurately when inserting the memory card into the card slot to avoid of damage. Please slightly push the upper edge of the card to loosen it when removing the memory card, then pull it out.
- It is normal when the memory card getting hot after long time working.
- The data stored on the memory card may be damaged if the card is not used correctly, even the power is cut off or the card is pulled out when reading data.
- Please store the memory card in packing box or bag if not used for a long time.
- Do NOT insert the memory card by force to avoid of damage.

5. Operation Guide

Basic Operation

- Soft keyboard

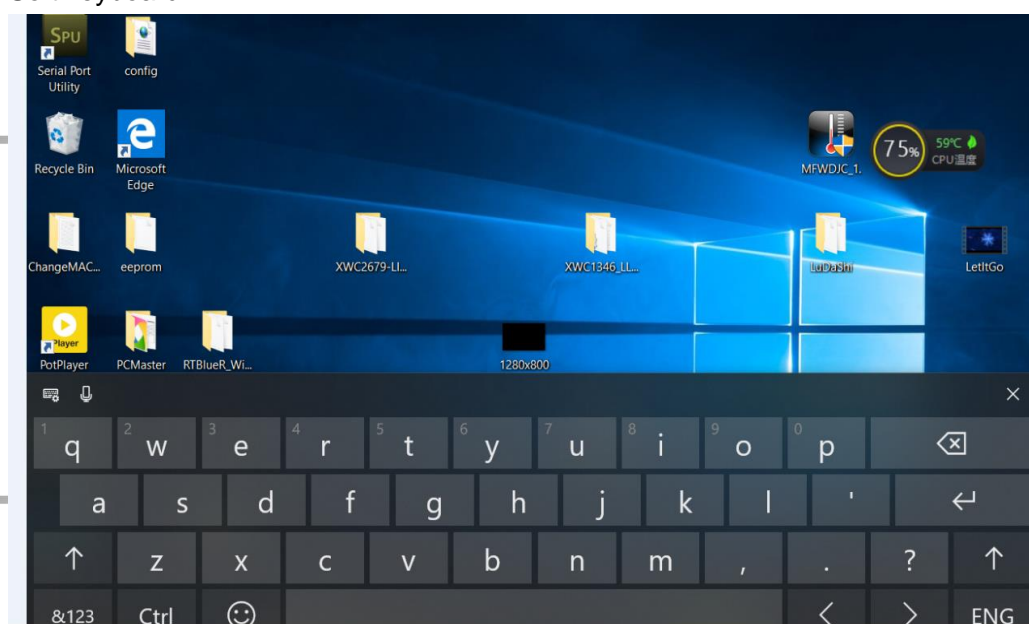


Figure1

- Network settings: Network Connections shown as Figure2. Make sure the MAC address shown on the screen should be match with the one labeled on the rear of device as the device has two LAN ports.

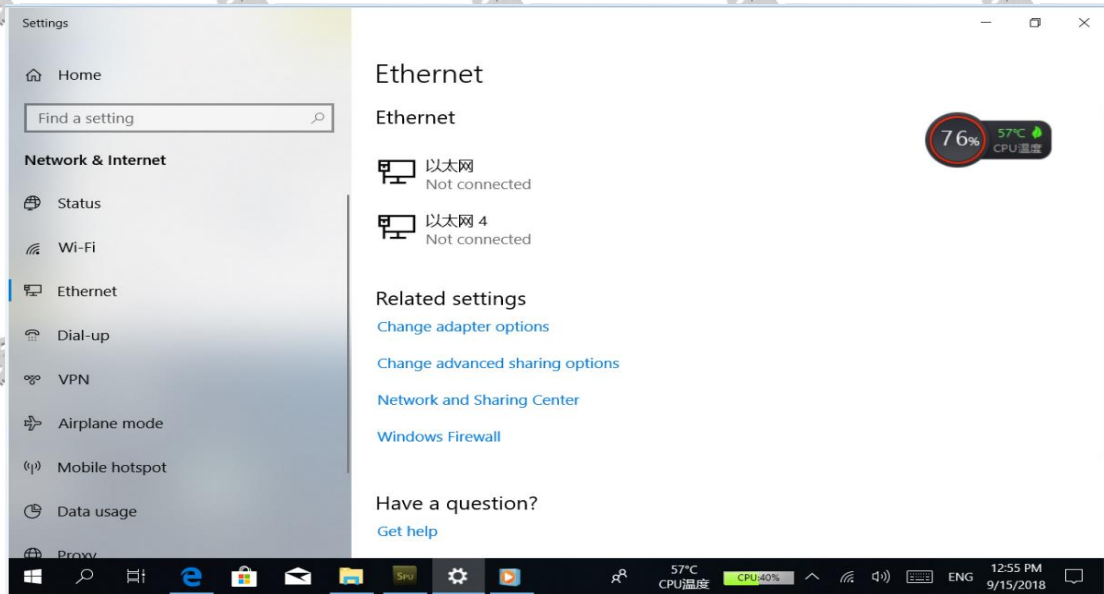


Figure 2

- Wi-Fi connection shown as Figure 3

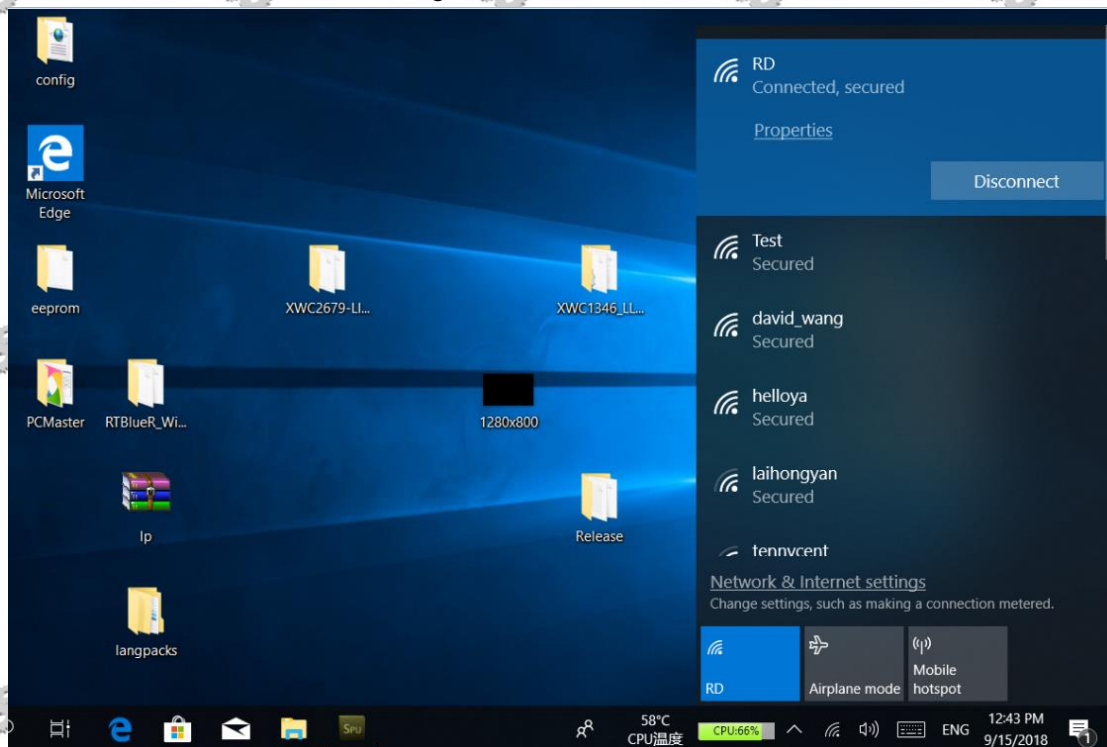


Figure 3

- Application of SIM Card (Please note the device should be restarted after SIM card inserted) shown as Figure 4.

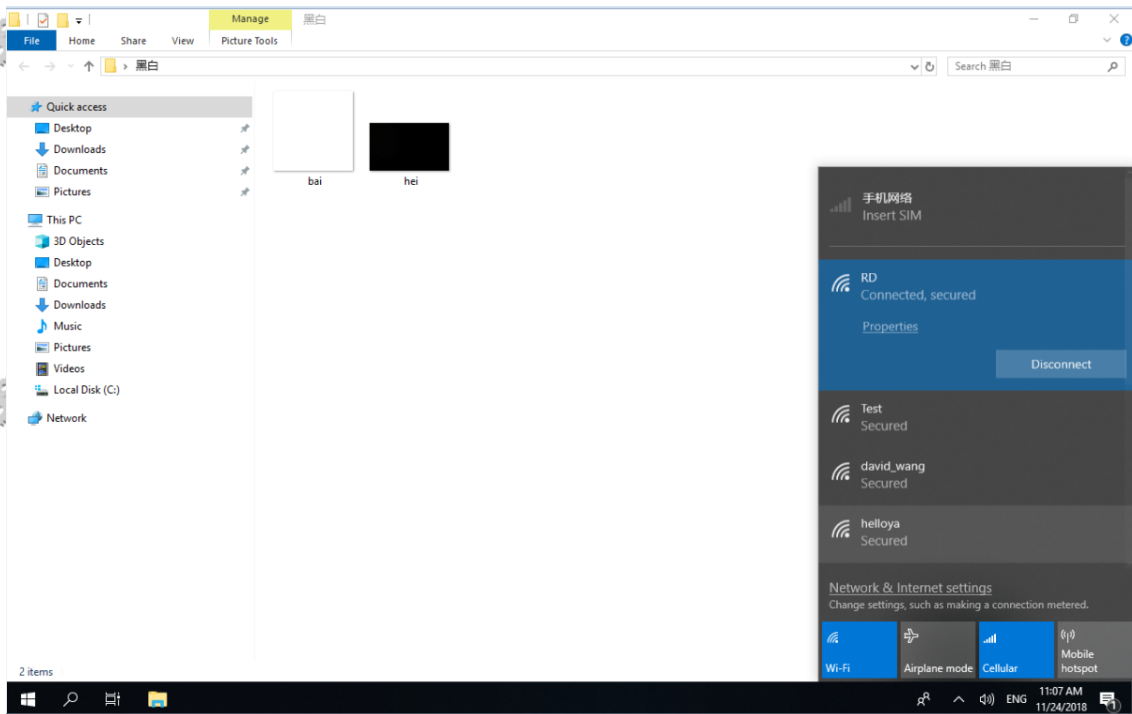


Figure 4

- Browser shown as Figure 5.

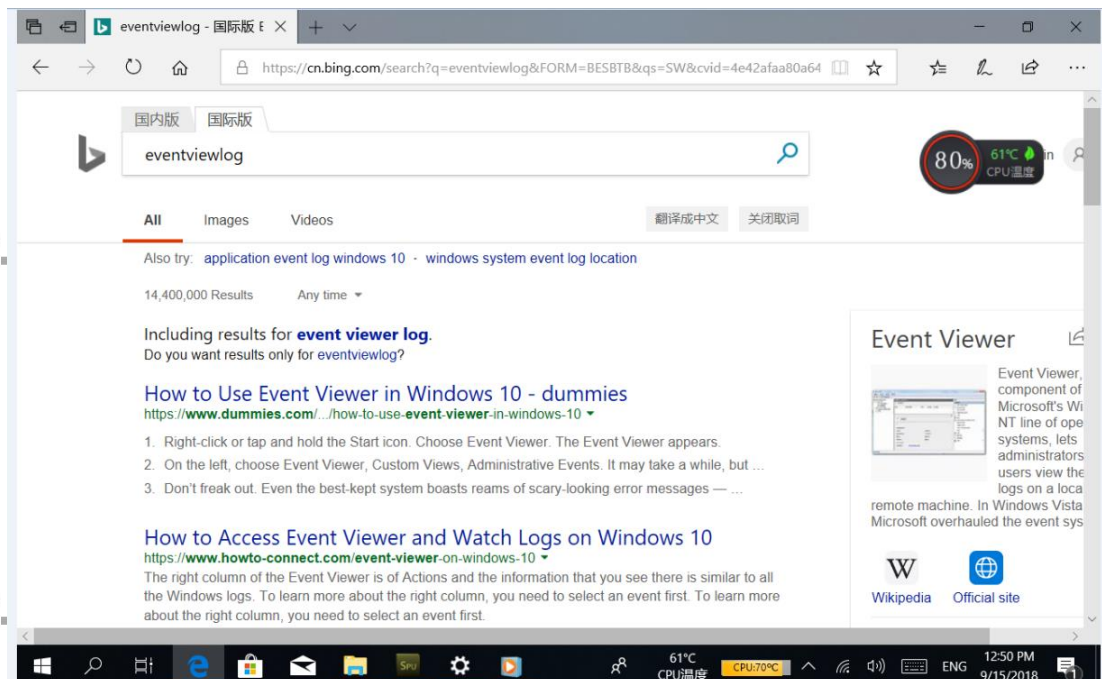


Figure 5

- Application of Bluetooth: Bluetooth Manager shown as Figure 6.

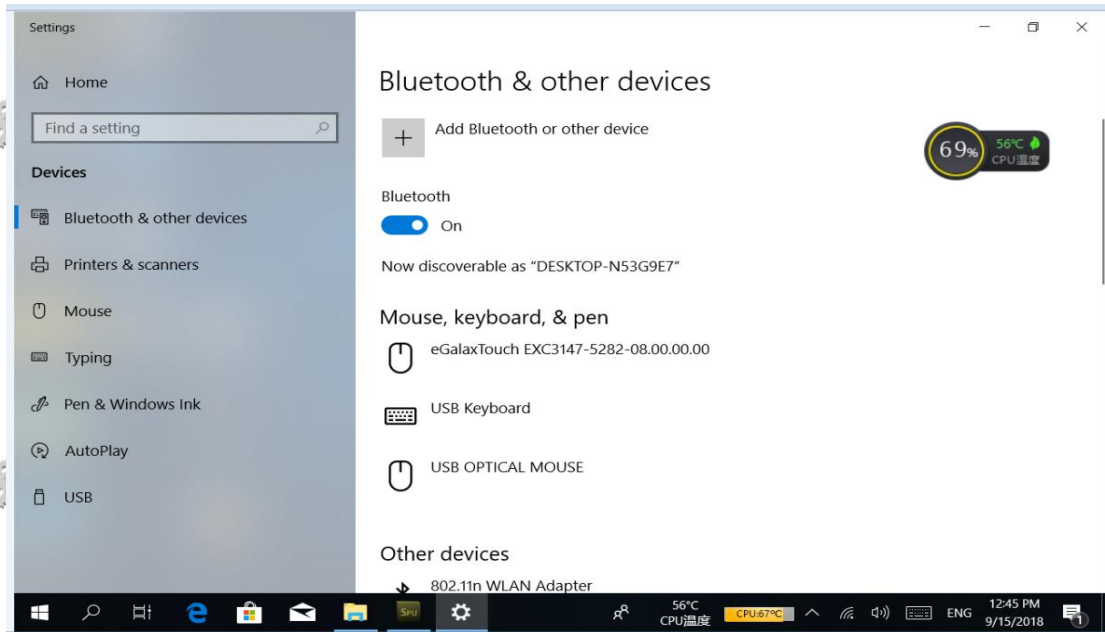


Figure 6

- Multimedia shown as Figure 7

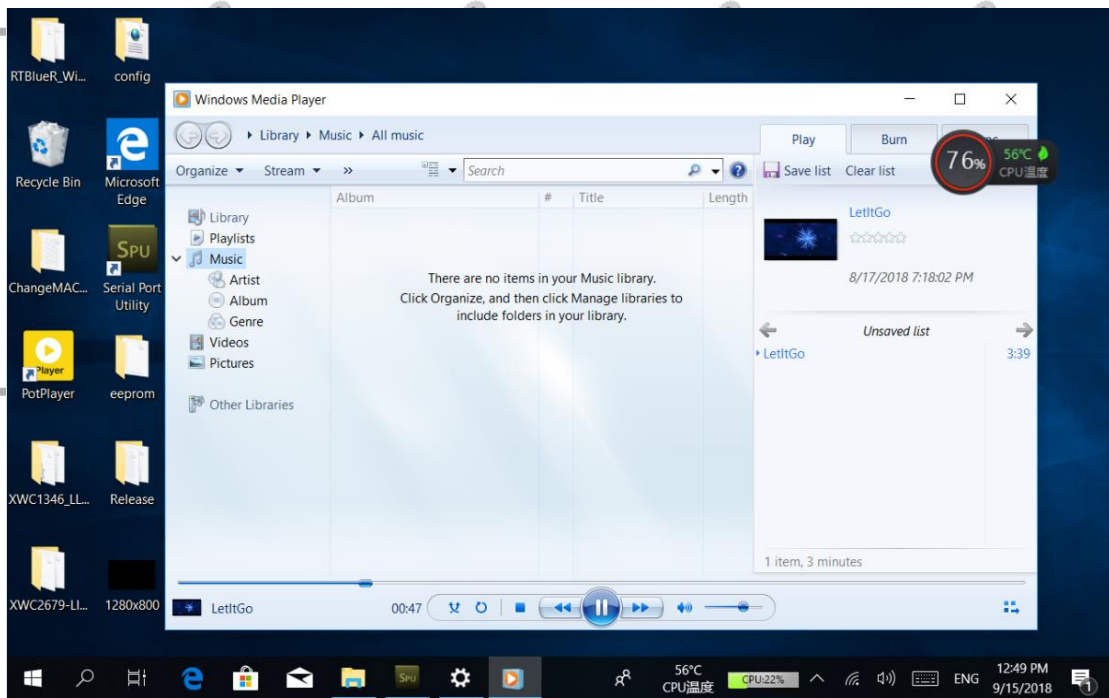


Figure 7

- Brightness settings shown as Figure 8.

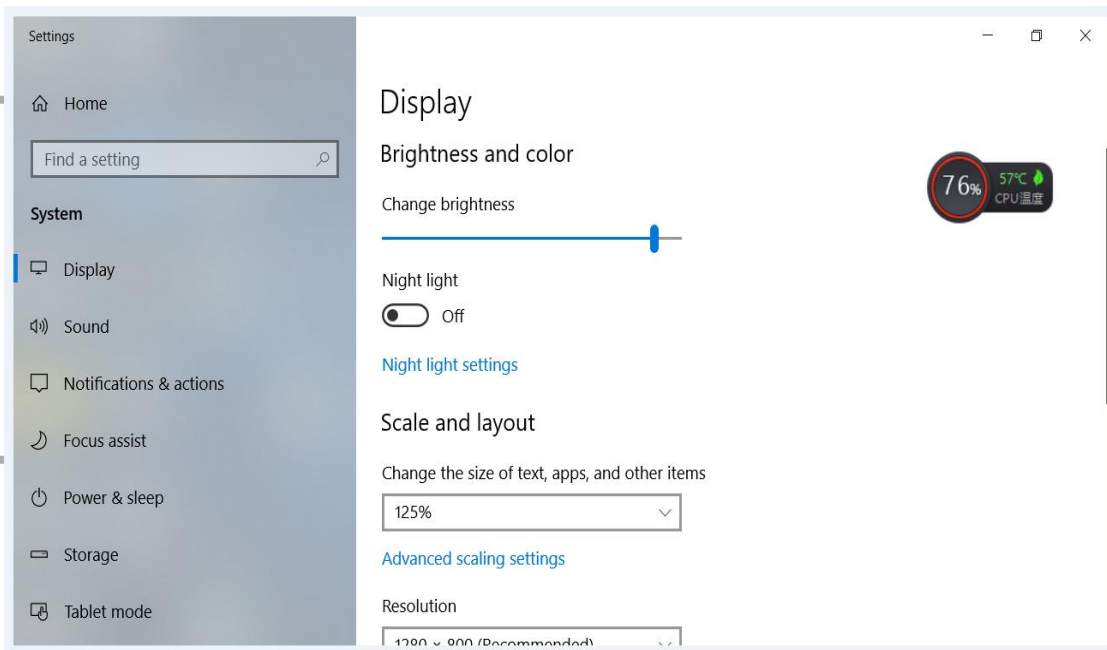
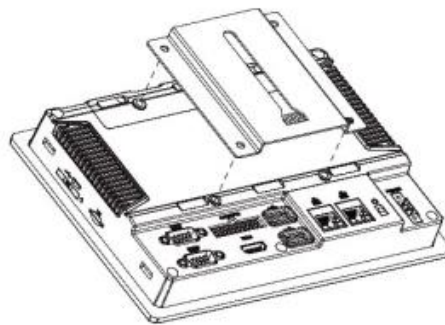
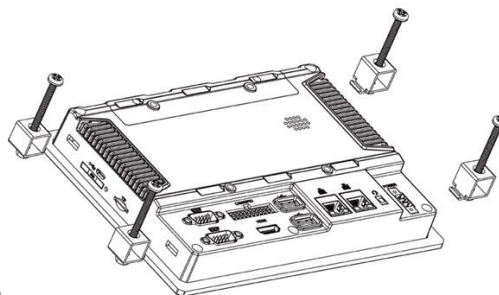


Figure 8

6. Mounting Methods



VESA 75mm rail slot



Embedded mount

7. Accessories

Standard Accessories:

1. DC12V adapter-----1piece
2. GPIO cable-----1piece
3. DB9 cable (RS232x3) -----1piece
4. CD drive-----1piece
5. Fixed screw-----4pieces
6. User Manual-----1copy

Optional accessories:

1. DB9 cable (RS232x1, RS485, RS422) -----1piece
2. Micro TF Card-----1piece
3. 75mm VESA rail slot-----1piece

8. Trouble Shootings

Power Problem

Cannot boot up

1. Wrong cable connection

Connect Extended cable with device first, and connect the AC end of DC adapter with DC input port of Extended cable, then the other end of DC adapter connect with power plug socket.

2. Bad connection

Check every connection and socket of power source.

Screen Problem

1. No picture on screen.
2. The application reaction time is too long and cannot be activated when clicked.
3. The image appears delay or still when switching.

Please restart your system if the device has any problem as described above.

4. Display screen is misty

Please check whether the display screen surface has dust filth or not. Please simply wipe with clean and soft cloth.

5. HDMI problem

Incorrect responding to the touch click on screen when connect with HDMI.

It is recommended to operate with mouse, the incorrect responding can't calibrate at present.

Note: Due to constant effort to improve products and product features, specifications may change without notice.

